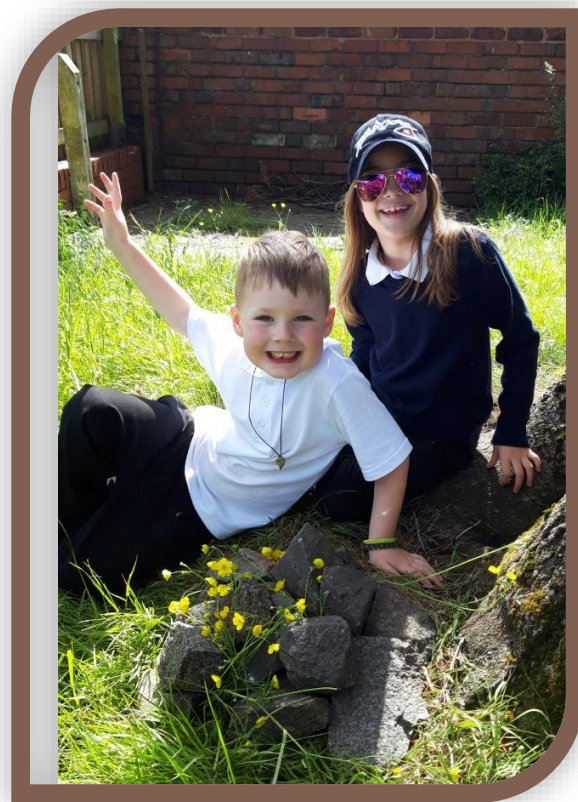




Annual Report 2018/19



Home-Start Wyre Forest

Registered Charity No: 1120436

A Company Limited by Guarantee No 5419029

What is Home-Start ?

Home-Start Wyre Forest (HSWF) is a Family Support Charity, offering practical and emotional support to parents with children in their own homes and at groups, helping to alleviate stress and prevent family breakdown.

We can offer support to families with children aged

0-18 years, providing they are living in the Wyre Forest District and give consent for the referral. Many families we support are experiencing difficulties with mental health, isolation, drugs or alcohol, housing, a multiple birth or may have experienced past traumas, such as domestic abuse.

Our core service is our weekly home-visiting volunteer visits of 2-3 hours a week, offering emotional and practical support and befriending.

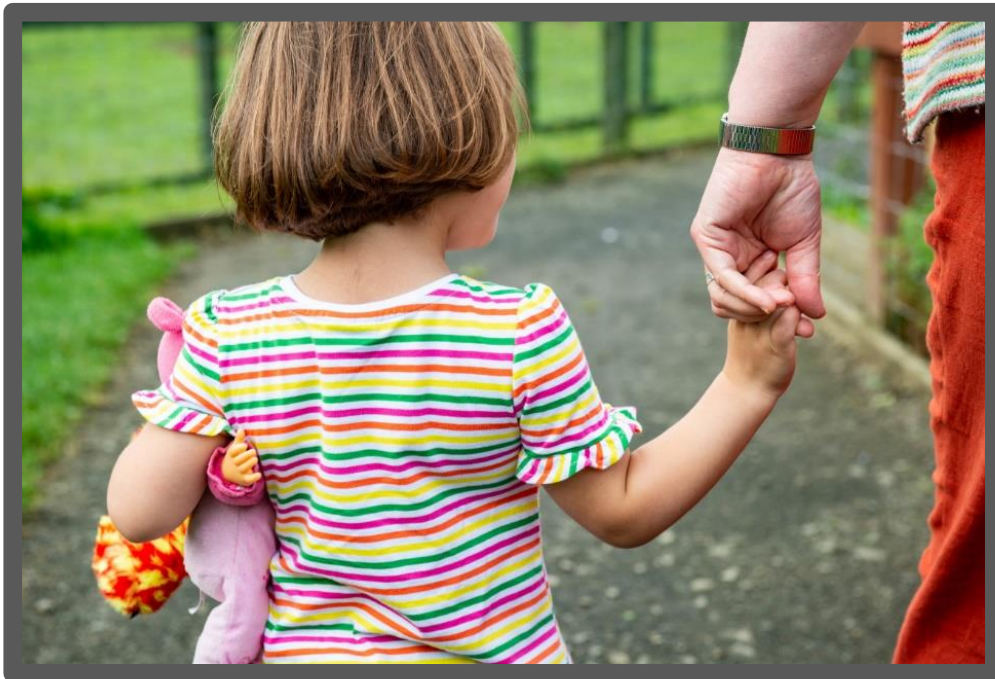
This may include providing conversation and a safe person to talk to, helping isolated families to make links in the community, or supporting parents in playing with their children and enjoying time together, despite the difficulties they are facing.



Most of all, the volunteer builds a trusting, friendly relationship with the family they support over a significant period. Our average support remains at 9-12 months with families with more complex needs coming to us for longer.

During 2018/19 we received 64 new referrals and supported 367 children in 185 families.

53% of the children we supported were aged under 5 years, 47% between 5 and 18 years of age. 64% of families we supported this year had Social Care contact, with 46% having a Child Protection or Child in Need Plan in place, a process to which we make a significant contribution.



In addition to our core support we offer:

- After School and Pre School Family Groups
- Community Psychology (Safe & Strong) service
- Trips and events.

Chairman`s Report

Welcome to the Annual report for Home-Start Wyre Forest for 2018/2019. It has again been a period with many ups and downs but the many challenges and opportunities have all been dealt with in a positive way that continues to take the scheme forward.

The non-judgmental support and befriending offered to many families within The Wyre Forest through our regular home visiting volunteers and our family groups is needed as much as ever. During this period we supported 367 children in 185 families.

We continue to work closely with Big Local DY10, working together to help improve family and community life in their area. Their help with funding family groups and other areas of our work is invaluable, as is the support given by members of their team.

The Midcounties Co-operative has again given wonderful support to us as their Charity Partner and we are delighted that this is to continue for a further year. They have provided not only opportunities for us to fund raise within their stores, but also trips to Weston and a wonderful Christmas party for families. The enthusiasm and help from their staff for Home-Start Wyre Forest is appreciated by all.

During this period, following the award from The Community Fund Lottery Grant for Safe & Strong, we have been able to appoint staff who work with The Family Psychologist to offer much needed psychological support for some parents and children.

We would like to thank all our funders and sponsors, big and small, for their financial help and support, including those who climbed Snowdon and competed in the Gung Ho event, both in challenging weather conditions.

During the year there have been a few personnel changes. We welcomed Kelly Hurst as a new Co-ordinator working with Safe & Strong and the management committee has recently welcomed Sam Guille.

A big thank you to all who support Home-Start Wyre Forest in any way, but an especially big thank you to our wonderful volunteers who work so closely with the families , in their homes or at family group, providing much welcomed and needed support and friendship.

A further big thank you must go to all the staff, who are led fantastically well by Belinda. They all continue to work extremely hard to provide appropriate help for the many families in their care and in giving excellent support to all our volunteers.

I would like to thank all at Home-Start Wyre Forest - staff, volunteers, trustees and all who support in any way, so that together we can continue to provide an excellent service to our community by meeting the challenges and making the most of any opportunities that arise.



Megan Weaver
Chairman

Life President`s Report

When I first joined Home-Start Wyre Forest it was a small organisation with a small office on the site of the Sugar Beet Factory. Gradually it has grown in size and become the organisation it is today, with after school clubs and helping families with children up to the age of 18.

Funding is always an issue and Belinda does a fantastic job by applying for funds that we are eligible for based on our needs and priorities. It should be noted that most funding is for a certain length of time and for specific areas of activity. We are especially grateful for money coming in which is not earmarked for a specific purpose.

Midcounties Cooperative have made exceptionally generous donations to the Scheme, funding children's parties and the trip to Weston Super-Mare, which has become an annual tradition. They have also helped us in all sorts of other ways, for which we are grateful.

Belinda and the staff are all exceptional people, who have the volunteers and families at the centre of their working lives.

Unfortunately, I am unable physically to do as much as I have done in the past. However, I do provide non-managerial support for the team, and I regard this as an honour.



Barbara Hughes
Life President

Treasurer`s Report

Overview

The year started on a low financial note with many applications for funding being lodged but without guarantees of success. The Board continued to scrutinise costs carefully and implemented several cost reducing initiatives during autumn 2018. Money was tight but we managed to maintain all our core support roles and provide the services that we always had. We received the final Lottery payment and the Children in Need funding was still on-going as was the partnership with DY10 Big Local Trust.

Home-Start Wyre-Forest is reliant upon philanthropic and corporate grants and the generosity of individuals, as no direct public sector funding is received. However, we did benefit from two major public funded grants being DY10 Big Local Trust and Children in Need.

In the first quarter of 2019 we received the wonderful news that our application to the Lottery for funding had been accepted and this enabled us to start planning the implementation of our new Safe and Strong project, making psychology support available to our families. This funding began in April and not only provides for the psychologists' costs but supports some of our other running costs, providing us with a more secure financial base. This funding agreement is for five years so providing us with confidence to plan for the future.

Income

In the year our total income was £210,330 compared to £119,179 in the previous year - an increase of 76% over the previous year. This was largely because of our increased involvement with DY10 Big Local Trust and the start of the Lottery Safe and Strong funding.

This income was made up as below:

Funding Sources	2018/19	2017/18
	£	£
Children in Need	31,836	29,317
Eveson Trust	8,000	
Lottery	9,924	
DY10 Big Local Trust	76,000	39,572
MK Rose	5,000	3,000
Community Fund Safe and Strong	35,491	
Warburtons	250	
DY10 Big Local Moodmaster	1,965	
Kidderminster Aid in Sickness Fund	3,684	1,748
Lloyds	6,909	7,949
Midcounties Co-operative	964	6,290
Tesco		2,000
Garfield Weston	10,000	10,000
Stourport Mayor's Charity		2,881
Lasletts		2,000
Albert Hunt		3,000
Bank Interest	25	17
Other Trusts and Donations	7,215	6,425
Fundraising	13,067	4,980
Total	210,330	119,179

The Charity Partnership that we signed with Midcounties Co-operative in January 2017 continued throughout 2019 and was, as ever, very beneficial, not just with fundraising efforts, but with direct support providing refreshments and gifts for children's outings and Christmas parties.

Our partnership with DY10 Big Local Trust, which is Lottery Funded, has proved beneficial in many ways, with projects supporting families in the Horsefair, Broadwaters and Greenhill. DY10 Big Local Trust was our largest funder providing us with £76,000.

Also, much appreciated were grants from Children in Need at £31,836, Garfield Weston at £10,000 and all other organisations which supported us.

The amounts are not everything and we remain indebted to the many individuals, Corporate and Charitable donors who support us throughout the year. This is vital to enable us to try to increase the levels of support that we can offer.

Expenditure

Overall expenditure year on year increased from £166,366 to £198,392, an increase of 19%. This is mainly due to the psychologist fees and additional staff costs for the Safe & Strong Project.



The expenditure was made up as below:

	2018 19	2017 18
	£	£
Staff Costs	137,592	116,754
Volunteer Expenses & Recruitment	4,869	4,879
Psychologists' Fees	9,200	-
Operational Costs	46,731	44,733
Total	198,392	166,366

Surplus / Deficit

Collating the Income and Expenditure figures above results in the following Surplus / Deficit positions:

	2018/19	2017/18
	£	£
Income	210,330	119,179
Expenditure	198,392	166,366
Surplus / -Deficit	11,938	-47,187

The Deficit of £47,187 has become a Surplus of £11,938, an improvement of £59,125.

Available Funds and Reserves

In October 2018 we started with a strong cash position of £67,000, of which £35,000 was a formal reserve to cover the costs of closure, should that eventuality occur.

The Board meets regularly and reviews the level of this reserve to ensure that all commitments could be met for closure costs and redundancy payments. This reserve is held in an interest-bearing account to provide separation from day-to-day funds. All other funds remain available for use in the short to medium term and no long-term or speculative investments are held.

The balance of available funds carried forward to 2019/20 was £44,000, an increase of £12,000 on the prior year.

	2018/19	2017/18
	£	£
Funds Brought Forward	67,000	114,000
Surplus / -Deficit	12,000	-47,000
Funds Carried Forward	79,000	67,000
Of which		
Designated reserve	35,000	35,000
Available funds	44,000	32,000
Total Funds Carried Forward	79,000	67,000



The Outlook for 2019 20

The outlook for 2019 20 is very encouraging as we have the continuing Lottery funding guaranteed, our partnership with DY10 Big Local Trust is ongoing and very mutually successful and we have secured further funding with Children in Need, starting in January 2020 which is worth £98,000, over the three years. There are also other grant applications on-going, some of which are progressing steadily and we are hopeful of further grants being received. Our cash position is strong and healthy.

We remain ever-grateful to all of our sponsors, our staff, our volunteers and our partners and we remain confident that we will be able to continue to provide the valuable support that we offer to many families who need that little extra help.




Brian Price
Treasurer

Our Family Groups

Our weekly Family Groups provide somewhere safe and supported for the most vulnerable families in our community to meet, form friendships and gain support. In addition to providing the standard weekly structured sessions and activities, we enable families to enjoy their time together, feel part of the wider community and develop and feel proud of new skills.

We ran the following groups during the year, funded by DY10 HBG Big Local*:

 Tuesday Kidderminster After School Group (parents and children 5 yrs plus)

 Thursday Pre-school Group (parents and children 0-5 yrs)

 Thursday Kidderminster Afterschool Group (parents and children 5 yrs plus)

We also ran a Stourport After School Group until July 2019, funded by Midcounties Co-operative, when the group closed due to low attendance. It was noted families from Stourport were travelling to our Kidderminster Groups, so now families can attend any of our Groups from anywhere in the district.

This year we delivered 134 Group sessions with 99 children and 69 adults attending the groups.



*See Page 23

All group sessions are a way of promoting a sense of self worth, belonging and acceptance, which many of our parents and children have never experienced. Providing a place for family friendships to develop enables these connections to act as the foundations for social confidence and competencies which will hopefully prevent families from becoming further isolated. This resilience and self belief are essential for both adults and children to manage adversity and ensure a happy, safe and productive future.

“Let them learn about themselves in a space with just enough boundaries. Let them learn about responsibility, about the effects their actions have on others. Integrate them into the community around them. Let them learn to resolve disputes in a responsible manner. Such resources for our young people have been particularly hard hit over the last decade.

There is a cost to running such a service – but there’s a much greater cost to society of not running it. A cost now and a cost in the future”.

(Sir Stuart Etherington, CEO National Council for Voluntary Organisations, 2019)

Local donations of food, toiletries and end range goods from Midcounties Co-operative, Tesco and local individuals are taken to the Groups to be distributed to families, which is a great way of providing accessible goods which families can take home at the end of the session. It also enables parents to chat and build friendships while sharing out the donations.



Thursday Under Fives Family Group

Our Volunteers

We trained 21 new volunteers this year and a team of 102 community members volunteered their time during the year to deliver our service or govern the scheme.

All home visiting volunteers complete a 40 Hour Course of Preparation, covering many subjects, including Safeguarding Children and Vulnerable Adults, Confidentiality, Mental Health and Domestic Abuse. As part of our Safer Recruitment Practices we also carry out home visits, reference checks and obtain a Disclosure and Barring Service (DBS) Enhanced Disclosure for all volunteers.



End of Preparation Course April 2019

Without our volunteers there would be no Home-Start.

Following the Preparation Course, we offer On-Going Training, to further develop the volunteers` skills and to support their own personal and professional growth.

This year included sessions on :

- When a loved One Dies (Midcounties Co-op Funeral Care)
- Safeguarding Children and Young People Refresher

All our training resources are uploaded to our website www.homestartwyreforest.org.uk to ensure those volunteers who cannot attend the courses can gain basic awareness of the subject and as a place to refresh their knowledge of past training.

“I do find volunteering satisfying, sometimes challenging but never boring!” (HSWF Volunteer)

Looking after our Volunteers

All volunteers receive regular support and supervision from a named Co-ordinator while linked with a family and this is complemented by group support sessions and regular newsletters and updates.

We recognise long service at each Annual General Meeting and of our 102 volunteers 34 have long service awards (given at 5, 10 and 15 years), with 4 volunteers having served 15 years or more with us!



Measuring Impact

Our staff carry out needs assessments with families at the beginning, during and at the end of our support, to ensure our involvement is helping the family, to allow us to change the focus of support and to assess impact. In addition to this, our volunteer supervision system enables us to record change observed by the volunteers and staff.



The support we deliver to families is recorded, monitored and evaluated through our Evaluation Framework, which records data in the following areas:

<p>Systems and Learning</p> <ul style="list-style-type: none"> • What is enabling access? • What are barriers to support? • What are we learning about delivery? 	<p>Case Studies</p> <ul style="list-style-type: none"> • How is trust being developed? • How are our Volunteers Growing? • How support is paid forward?
<p>Aligned Funding and Benefits</p> <ul style="list-style-type: none"> • Match funding attracted • What have we saved the public purse? • What are the secondary benefits of our approach? 	<p>Data</p> <ul style="list-style-type: none"> • How many people are we supporting? • How many volunteers are we engaging? • What is the financial value of our service?
<p>References and Testimonies</p> <ul style="list-style-type: none"> • Volunteers • Beneficiaries • Referrers • Aligned agencies 	<p>MESH (Monitoring and Evaluation System Home-Start)</p> <ul style="list-style-type: none"> • Baseline evaluation of need • Mid and end evaluation of need • "Distance travelled" measured



This enables us to record evidence of the impact of our support throughout the year, not only for individual families, but for the wider community and aligned local and national agencies.

Our service improves outcomes for parental and child physical health, mental health and wellbeing, isolation and child behaviour.

**Because
tomorrow
starts today**



Our Families say....



“There is no other charity that can do what these people continue to do daily. They thrive off knowing they’ve helped families succeed and achieve the support they need, to continue a happy healthy life for both themselves and their children. Having met the ladies, I cannot fault a single one, as they all have hearts of gold and will do anything to help another person. I’m so grateful for HSWF and everything they’ve done for me and my family and one day I hope to be able to return the happiness they’ve given me. They’ve given me a look into the future and what I want to do. If I could help just half as many people as these amazing selfless people do, I know I’ve done alright”.

“As a single Dad, it took me a long time to ask for help as a man and actually get out with my two children. The staff are always amazing and everyone who goes to group always smiles and speaks. It puts us all in a happier place”.

“They’re always there to help when there’s a bump in the road along the rough journey some of us travel. They’ve inspired so many to want to help others who are exactly where they have been”.

“I love them like they`re my friends. Keep up the good work and thanks for being amazing. The groups, the support, the volunteers; they are an amazing team who need recognition- caring helpful warmth friends”.

“I wouldn't have managed without their help and my family would have fell apart. They are amazing”.

“Someone who is there no matter how bad your day is and provides a safe place to meet up and cry if needed and an ear, also having volunteers that come to your house when you aren't up to going out. Stops the feeling of isolation. I would still be struggling with my son and being in an area I don't know anyone if it wasn't for the volunteers and HSWF. I have somewhere I can go to each week if I feel well enough and if I don't they do check in on you.”

“It has been a very difficult year for my family and you`ve helped keep us strong and positive through the emotional rollercoaster”.

**“They are not just an agency
.....they are family”.**

**For parents when
they need us most**



Our Referrers and Partners say....

“As a Specialist Family Support Team within Worcester Children’s First we find the services you provide completely invaluable for the families with which we work. The benefit to the families is extraordinarily high, with many parents we work with telling us they don’t know what they would do if they didn’t have their Home-Start volunteer. The groups, support and befriending makes such a huge difference to some families, it can prevent them even being referred to Children’s Services, as Home-Start are supporting where they need, at a level when issues they may encounter are easier to maintain. You provide such a wealth of high quality support, the only area to work on is that there are not enough of it!”

“Great support, brilliant advocacy and befriending service provided by caring and compassionate volunteers. Amazing support for families.”

“You give family hope and helps them feel like they belong. Supports with getting families out to groups to improve children`s health and development and life chances. As a Health Visitor I could not do my job without you.”

“They keep families together and help them to cope with their pressures and responsibilities. I am proud to work in partnership with HSWF.”



Our Volunteers say....

“Friendly, fantastic bunch of people. A wonderful organisation that I’m proud to be part of!”

“HSWF’s level of care and support towards families is absolutely fantastic, the change they make in people’s lives is wonderful, not only the children whom they help mould into happy healthy adults, but also the parents who grow as individuals too”.

“HSWF looks after those families that need help and supports them in any way they can. The Co-ordinators, Manager and Secretary ensure that the volunteers are also well supported. As far as I am concerned they do everything possible that they can, but need to ensure that there is enough funding to support the families.”

“I’ve found being a volunteer so rewarding and it fits in perfectly with my own routine. Home-Start supports families where they are at, whether that is practical or emotional. Supports and values its volunteers. They are fabulous people who do a tough job always with a smile on their face, and have a really genuine heart for those they support”.



“They look after their volunteers and families. They have a real passion to look after their families. The training is thorough and prepares you well.”

“Super friendly & hugely supportive at every level. Very professionally managed. Provides great, non-judgmental support to families, especially as there is less and less statutory help available. Makes volunteers feel greatly valued and well supported. It is hard to think how the service could be improved. The manager & coordinators work extremely hard & have more and more difficult issues to deal with, as well as having to contend with a broken NHS & Social Care system. They take on an enormous amount of responsibility and regularly go beyond the call of duty. Being a volunteer is a big commitment but it is an incredibly rewarding thing to do.”

“Home-Start supports its volunteers, befriends lonely parents, presents a good example to children and young people. It already exceeds expectations thanks to dedicated staff. The group struggles for funding to meet the demands of local families”

“A well timed intervention is always better than picking up the pieces further down the line.”



To our fantastic volunteers...

Working in Partnership

In addition to working cooperatively with many local groups this year, we have held three significant, formal partnerships.



DY10 HBG Big Local

This is a ten year Lottery funded neighbourhood improvement project working in parts of Horsefair, Broadwaters, and Greenhill in Kidderminster. The Plan is designed by the community, for the community and delivered by a Partnership led by residents of that community.

In 2018/19 the partnership funded our volunteering courses, Family Groups and support for their residents. We continued to provide the partnership with a Human Resources Service, including employment and line management of their staff team. We were able to join their activities and events for local families and delivered project work in partnership, including hosting a 12 week MoodMaster course (below right) and providing support to their programme of summer activities (below left).



FREE COURSE FOR HSWF PARENTS LIVING IN HORSEFAIR, BROADWATERS AND GREENHILL. JUST SPEAK TO YOUR CO-ORDINATOR

WELCOME SESSION MEET SUSIE THE TRAINER 8TH JANUARY 2019

EACH TUESDAY TERM TIME FOR 12 WEEKS FROM 15TH JANUARY 2019 10AM-11AM

RUNS FROM PORTACABIN SPRINGFIELD PARK

Home-Start Wyre Forest
MCF Complex 66 New Road
Kidderminster
DY10 1AQ
01562 825896
Registered Charity No 2022498

MOODMASTER COURSE- MANAGING STRESS AND WORRY

MoodMaster provides a range of simple tools and techniques to help manage life's emotional ups and downs more effectively, cope better with everyday stresses and worries and improve our overall quality of life.

Each week the MoodMaster sessions will focus on a different topic and provide simple coping skills that can be put into practice.

Home-Start Wyre Forest
Big Local DY10
MoodMaster
Support and Friendship for Families

The Family Psychologist



Child & Family Assessment Centre

www.thefamilypsychologist.co.uk

Safe & Strong Service

Our scheme has worked with the team at The Family Psychologist to develop our joint service model for community psychology since 2015 and through management time funded by Lloyds Bank Foundation during 2018/19 we were able to produce a proposal for this work under the name Safe & Strong which was accepted by The Community Fund (National Lottery). In April 2019 we began a five year funded project to deliver psychological support to our parents and children who are unable to access statutory services and to provide training to our staff and volunteers in supporting and maintaining mental health improvements.

Our project Psychologist, Dr Rose Papadopoulos, delivers one to one therapy from the Sladen View Community Rooms each Monday, supported by our Co-ordinator, Kelly Hurst, who offers wrap around care for those attending therapy, removing barriers and enabling access.



The Safe & Strong Team- Dr. Rose and Co-ordinator Kelly

The outcomes of Safe & Strong are:

- Community members will have improved mental health as a result of bespoke, joint psychological and family support at the earliest opportunity
- Community members will have improved resilience to adverse future experiences and unsafe relationships
- HSWF will be strengthened through access to training and skill acquisition in facilitating group support to maintain long term positive mental health.

By delivering specialist mental health services within the safe framework of HSWF and in a non-clinical setting, we are able to remove barriers and enable the most excluded adults and children we support who are in need of mental health services to obtain the help they need. This project provides 86 therapy places over the five years.

The management time which our Lloyds Grant provided for this work was the stepping stone required to apply and obtain larger level funding for the project delivery – one could not have happened without the other.



Safe & Strong- psychology and support for adults and children in The Wyre Forest





Midcounties Co-operative

In January 2018 we began a two year Charity Partnership with the Wyre Forest group of Midcounties Co-operative, which has now been extended into a third year (ending December 2020). A Regional Group meet regularly to plan and review community action, including fundraising and support for their Charity Partner. We continue to be overwhelmed by the enthusiasm and commitment of this group to help us, not only in raising funds and our profile, but also in delivering additional activities to our families. This year the group has

- Invited us to bag pack in stores four days each month to raise funds
- Hosted a Christmas Party for our families to attend where they enjoyed a disco, magician and fish and chip supper, followed by a visit from Father Christmas. All families were given amazing hampers and sweets to take home, making it a very happy Christmas celebration (below).



- Supported our Fundraising events- including 16 colleagues running in the Gung-Ho! Challenge (on a very wet and windy day thanks to Storm Hannah!)



- Donated food and Mother's/Father's Day items to our families

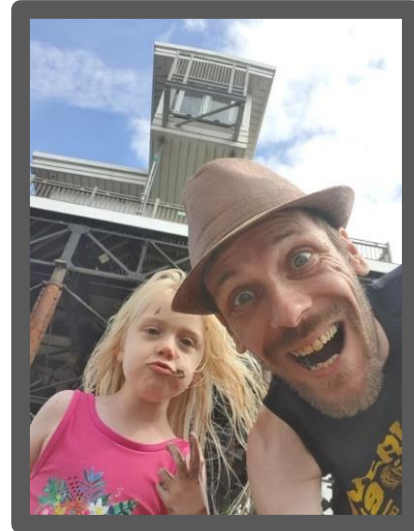


- Acted as a donation point in the Christmas Gift Appeal.

- Funded a day at the seaside with lunch packs for over 100 of our parents and children in August 2019



Midcounties staff meet the coach with lunch packs for all



HSWF Dad Daz and Maisie

The day trip provides the chance to create some lasting memories for families away from the pressures of home.

- Midcounties attended our AGM with information for members and details of our partnership (Lou Brown, below right) and promoted our Volunteer Recruitment opportunities, leading to MC colleague Norma White (below left) completing her nine week Preparation Course with HSWF in July. Norma is now supporting a local family.



In September 2019 we nominated the Regional Community Group for a “Good Neighbour” Award with Kidderminster Town Council, which we were delighted they won. Below Bob Richens, Sue Spicer and Elliot Cook from the Group with their very well deserved award.



In the first 18 months of our Charity Partnership, Midcounties Co-operative raised £20,243 for our service. The Partnership has now been extended until December 2020!

The Shuttle

Christmas Toy Appeal

We were delighted to be partners once again in the Kidderminster Shuttle Christmas Toy Appeal, where members of the public bought gifts for the children of families who were receiving support from us and passed them on through the scheme anonymously. An amazing 835 gifts were donated in December 2018 and passed onto families, demonstrating true community spirit and making the festive season a little happier.

Every family who were supported by HSWF during the year received a bag of gifts for their children, which eased the pressure felt by many at this time of year.

Our donation partners, who acted as drop off points for the appeal included Midcounties Cooperative outlets, Wrights Solicitors, Tesco stores, The Swan Centre, Weaver`s Wharf outlets, The Salvation Army, Bewdley Methodist Church, Beakbane, Lloyds Bank and Bewdley Rotary Club.



Fundraising Events

Ho, Ho, Harmonikx

In December 2018 we hosted a family friendly Christmas night of music and dancing at Kidderminster Cricket Club. Female vocal group Harmonikx performed for us and our families, volunteers and supporters raised £357 for the scheme.



Our families joined in the singing and dancing



We even had some little helpers on the HSWF Stall!

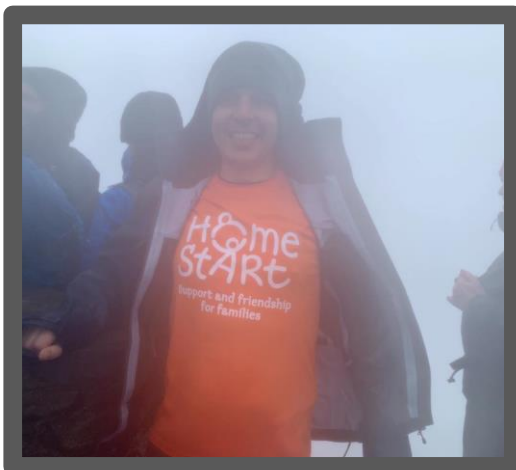
Jon Portman

One of the dads we support approached us in the year to offer his time to raise funds and awareness for us, in recognition of the support we were providing to himself, his wife and son. Jon (below) has raised a total of £240 for the scheme this year, through completing the Gung-Ho! Challenge.



Paul Carter

In September 2019 another local dad Paul Carter completed the Snowdon Llanberis Path for us, to acknowledge the support our charity gave his family when his children were small. Paul's partner Sarah went on to train as one of our volunteers after receiving help herself. Paul raised £1197 for the scheme.



Paul on Snowdon



Paul and partner Sarah

Ye Olde Severn Stars

We were delighted to be chosen as Charity Partner by the oldest pub in Kidderminster this year, after an introduction was arranged by Bernadette Connor at Midcounties Co-operative.

Landlord Lawrence (Loz) Goodwin and his staff and customers have arranged a host of events and activities for us this year, including the Cask Ale Challenge (below) and in total raised £790 for our scheme during this financial period.



Thanks to Loz and his team for all they have done for us this year.



With thanks for your support this year:

- Children In Need
- Lloyds Bank Foundation
- Garfield Weston
- Midcounties Co-operative
- Warburtons
- Monday Night Group
- Cllr. Vicky Caulfield
- Cllr. Nigel Knowles
- Masons Severn Lodge
- Kidderminster Lions
- Community Fund
- DY10 HBG Big Local
- Eveson Trust
- Kidderminster Aid In Sickness Fund
- MK Rose Charitable Trust
- Arley Kings Players
- Cllr. Vi Higgs
- Ombersley Golf Club
- Ye Olde Seven Stars
- Hagley Free Church

and to all the other groups and individuals who have made donations to us during the course of this year – without your support we would not be able to continue to do what we can to make a difference to local families.



The HSWF Team

The Board		
Megan Weaver	Chairman	Current
Linda Small	Vice Chairman	Current
Barbara Hughes	Life President	Current
Brian Price	Treasurer	Current
Jill Acton	Director	Current
Roger Bourne	Director	Current
Tracy Wilkes	Director	To Feb 19
Sam Guille	Director	From Nov 19
The Staff (HSWF Team)		
Belinda Darby	Manager	Current
Donna Scriven	Senior Co-ordinator	Current
Lynda Williams	Scheme Secretary	Current
Joanne Shinton	Co-ordinator	Current
Kelly Hurst	Co-ordinator	Current
Sam Littleton	Family Group Worker	To Dec 18
Maggie Warner	Co-ordinator	June-Oct 19
(DY10 HBG Big Local Team)		
Jayne Nicholl	Community Development Worker	Current
Bethany Hughes	Community Development Worker	Current
Stuart Adams	Fundraising and Project Manager	From Jan 2020

Thank you to our wonderful volunteers:

Amanda, Ann C, Ann F, Anna, Atlanta, Brenda, Catherine, Celia, Charlotte, Christine, Dawn L, Derek, Dorothy, Elaine, Ellie, Emily L, Emily P, Esther, Everleen, Gary, Harj, Hayley, Heather, Helen B, Jackie, Jan, Jane, Jayne, Jenny, Jo R, Jo W, Joanna, Jodie, Joy L, Joy P, Julia, Julie B, Julie P, Julie S, Katie, Kayleigh, Karen G, Karen W, Kelly, Kim L, Kizzy, Lakami, Lara, Laura, Lesley B, Lesley D, Lisa, Liz I, Liz H, Liz S, Louise G, Louise S, Louise T, Lucie M, Lucie P, Lynne, Margaret, Marjorie P, Marjorie W, Marissa, Marnie, Maz, Megan, Myra, Nancy, Nicky A, Nicky P, Norma C, Norma W, Paige, Paula, Pauline, Rosalind, Rosie, Sally, Sam A, Sam G, Sam M, Sandra, Sara, Sarah H, Sarah M, Sharon, Sophie B, Sophie J, Stacey, Stephanie, Sue D, Sue H, Sue P, Sue R, Sue S, Tammy, Tina, Tracey C, Tracy T, Trina, Val, Vicky, Zarina.

“This isn’t just about doing it for the sake of business, because it’s better for our economy to boost skills or prevent crime. We do it for its own sake, because it’s the right thing to do, for fulfilling lives for our young people and the adults they will become.

We all have to focus on this if we want a better, stronger, more cohesive country in the future.

Empowered voluntary organisations can create places and services that will make the difference we need to see in this country now and in the future.

Indeed the word ‘services’ doesn’t do justice to the vibrant ways that charities of all kinds connect and inspire and support people.

(Sir Stuart Etherington, CEO of NCVO, 2019)

Contact us

Home-Start Wyre Forest

MCF Complex, 60 New Road,

Kidderminster, Worcestershire, DY10 1AQ

Telephone : **01562 825896**

Email : info@homestartwyreforest.org.uk

www.homestartwyreforest.org.uk

www.facebook.com/homestartwyreforest



The need for our work is acute and growing.

In the UK right now 93,000 children live in care – an increase of 10,000 in 10 years.



Registered Charity No 1120436 A Company Limited by Guarantee No 5419029